

Engineering Specification

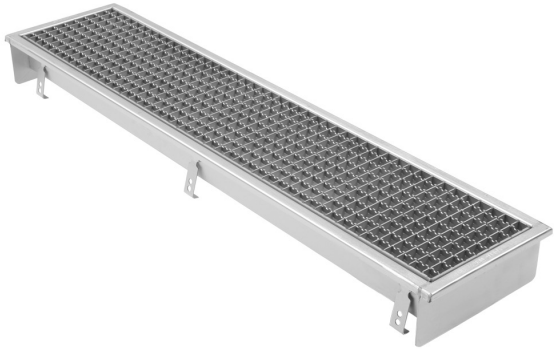
Job Name _____
 Job Location _____
 Engineer _____
 Approval _____
 Tag _____

Contractor _____
 Approval _____
 Contractor's P.O. No. _____
 Representative _____

Series BT8 8" Wide Pre-Sloped Trench Drain

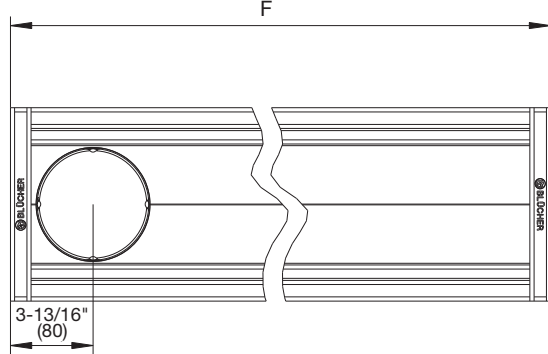
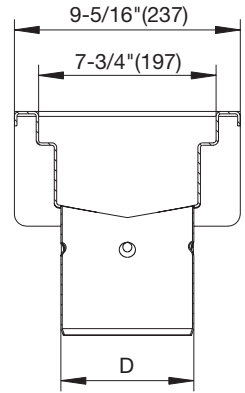
Specification:

BLÜCHER Series BT8 AISI Type 304 stainless steel pre-sloped trench drain, 8"(200) wide x (specify) long, with 1% longitudinal slope and 160 degree cross fall, 1"(25) thick mesh grating, and spigot outlet.



Optional Grating:		
Suffix	Description	
-HG	Hygienic-Pro Grating	<input type="checkbox"/>
-LG	Ladder Grating	<input type="checkbox"/>
-SG	Slot Grating	<input type="checkbox"/>
-SH	Shower Grating	<input type="checkbox"/>
-XLG	Fully Welded Ladder Grating	<input type="checkbox"/>

Options		
Suffix	Description	
-316	Type 316 Stainless Steel	<input type="checkbox"/>
-B	Sediment Basket	<input type="checkbox"/>
-FC	Outlet w/Membrane Clamp	<input type="checkbox"/>
-LD	Grate Locking Device	<input type="checkbox"/>



Dimensional Chart

Model No.	Pipe Size	Length
	<i>D</i>	<i>F</i>
Series BT8	Specify	Specify

Global Ref. # 670D

NOTICE

The information contained herein is not intended to replace the full product installation and safety information available or the experience of a trained product installer. You are required to thoroughly read all installation instructions and product safety information before beginning the installation of this product.

Approvals



Product is listed by NSF to ASME A112.6.3 and NSF/ANSI/3-A 14159-1 - Hygiene Requirements for the Design of Meat and Poultry Processing Equipment.



A WATTS Brand