

## For Commercial, Industrial & Marine Applications

Job Name \_\_\_\_\_ Contractor \_\_\_\_\_

Job Location \_\_\_\_\_ Approval \_\_\_\_\_

Engineer \_\_\_\_\_ Contractor's P.O. No. \_\_\_\_\_

Approval \_\_\_\_\_ Representative \_\_\_\_\_

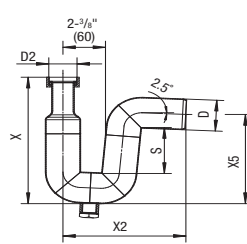
Tag \_\_\_\_\_

# B-TrapPipe

## Traps

### Specification

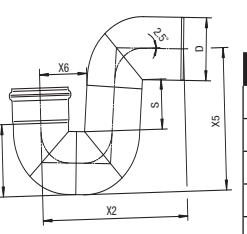
BLÜCHER PIPE AISI Type 316L (standard) stainless steel pipe system, with Push-Fit socket connections with EPDM (standard) sealing ring. All BLÜCHER PIPE to be treated with pickling and passivation finish process.



**P-Trap w/Coupling & Drain Plug Dimensional Chart**

Model No.	D	S	D2	X	X2	X5
PTC-2x1-1/4-316	2"(50)	2-15/16"(74)	1-1/4"(32)	8-1/16"(205)	6-7/8"(175)	5-3/4"(145)
PTC-2x1-1/2-316	2"(50)	2-15/16"(74)	1-1/2"(40)	8-1/16"(205)	6-7/8"(175)	5-3/4"(145)
PTC-2x2-316	2"(50)	2-15/16"(74)	2"(50)	8-1/16"(205)	6-7/8"(175)	5-3/4"(145)

Global Ref. # 525.XXX.050S



**P-Trap Dimensional Chart**

Model No.	D	S	X	X2	X5	X6
PT-2	2"(50)	2-15/16"(74)	2-1/2"(63)	6-7/8"(175)	5-3/4"(145)	2-3/8"(60)
PT-3	3"(75)	3-1/4"(81)	3-9/16"(89)	8-3/4"(222)	7-7/16"(189)	2-15/16"(74)
PT-4	4"(110)	3-9/16"(89)	5"(126)	11-3/8"(289)	9-13/16"(249)	3-3/4"(94)
PT-6	6"(160)	4-3/16"(105)	7"(178)	15-1/4"(388)	13-5/16"(338)	4-13/16"(121)
PT-8	8"(200)	13-5/8"(347)	16-5/8"(422)	40-3/16"(1020)	25-3/8"(644)	N/A

Global Ref. # 525.090.XXXS

**NOTICE**

The information contained herein is not intended to replace the full product installation and safety information available or the experience of a trained product installer. You are required to thoroughly read all installation instructions and product safety information before beginning the installation of this product.

**Approvals**



Compliance with NSF/ANSI/3-A 14159-1-Hygiene Requirements for the Design of Meat and Poultry Processing Equipment

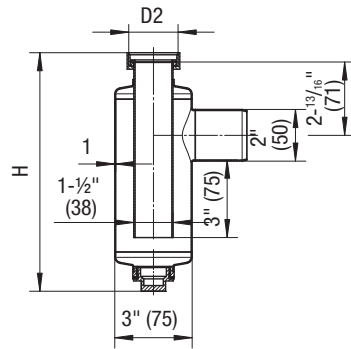


Product is certified to the uniform plumbing code ASME A112.6.3

Watts product specifications in U.S. customary units and metric are approximate and are provided for reference only. For precise measurements, please contact Watts Technical Service. Watts reserves the right to change or modify product design, construction, specifications, or materials without prior notice and without incurring any obligation to make such changes and modifications on Watts products previously or subsequently sold.



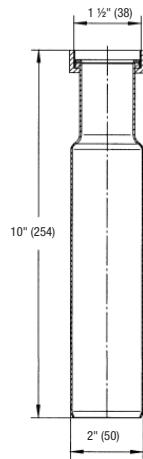
A WATTS Brand



### Bottle Trap Dimensional Chart

Model No.	D2	H
BT-1-1/4	1-1/4"(32)	9-13/16"(250)
BT-1-1/2	1-1/2"(40)	9-3/16"(233)
BT-2	2"(50)	9-9/16"(243)

Global Ref. # 505.XXX.050S



### Tailpiece Adaptor Dimensional Chart

Model No.	Pipe Size
TA-1-1/2x2-316	2"(50)

Global Ref. # 851.025.040S



A WATTS Brand