

For Commercial Applications

Job Name _____
 Job Location _____
 Engineer _____
 Approval _____
 Tag _____

Contractor _____
 Approval _____
 Contractor's P.O. No. _____
 Representative _____

BFD-230

Adjustable Floor Drain with 12"x12" Square Top, Bottom Outlet

Specification

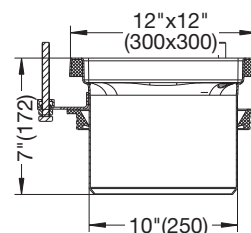
BLÜCHER BFD-230 AISI TYPE 304 stainless steel adjustable floor drain with 12"x12"(300x300) square top, 1/8"(3) grating (standard), and bottom outlet.



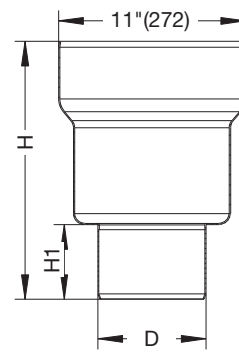
BFD-230

Dimensions

Model No.	Upper Lower	Pipe Size D	H	H1	Total Height Adj.
BFD-234	774.403.000 760.003.110	- 4 1/4"(110)	- 11 7/16"(290)	- 3"(76)	14 9/16"(370)- 16 15/16"(430)
BFD-236	774.403.000 760.003.160	- 6 5/16"(160)	- 12"(308)	- 3 1/2"(95)	15 1/4"(388)- 17 5/8"(448)



Upper Part



Lower Part

Optional Gratings (Select One)			
	Suffix	Description	
	-None	1/8"(Standard)	<input type="checkbox"/>
	-HG	Hygienic-Pro	<input type="checkbox"/>
	-LG	Ladder	<input type="checkbox"/>
	-MG	Mesh	<input type="checkbox"/>
	-SG	Slot	<input type="checkbox"/>

Please see ES-B-Commercial/Industrial Square Gratings for more information.

Options (Select One Or More)		
Suffix	Description	
-150	1/2 Grate (Standard Grating)	<input type="checkbox"/>
-175	3/4 Grate (Standard Grating)	<input type="checkbox"/>
-316	Type 316 Stainless Steel	<input type="checkbox"/>
-B	Sediment Basket	<input type="checkbox"/>
-P	Stainless Steel P-Trap	<input type="checkbox"/>
-R	8" Round Top	<input type="checkbox"/>
-SB	Sand Bucket	<input type="checkbox"/>
-TPT	Trap Primer Tapping	<input type="checkbox"/>
-VP	Grate Secured w/Vandal Proof Screws	<input type="checkbox"/>

Approvals



Compliance with NSF/ANSI/3-A 14159-1-Hygiene Requirements for the Design of Meat and Poultry Processing Equipment



NOTICE

The information contained herein is not intended to replace the full product installation and safety information available or the experience of a trained product installer. You are required to thoroughly read all installation instructions and product safety information before beginning the installation of this product.



A WATTS Brand